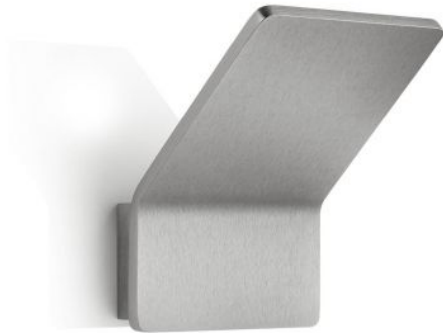


# Knapstein


## ANN-1

### Oberfläche

- nickel
- white



### Technical details

<b>Country of Manufacture</b>	 Germany
<b>Manufacturer</b>	Knapstein
<b>Designer</b>	Knapstein
<b>protection</b>	IP20
<b>Scope of delivery</b>	LED
<b>Depth in cm</b>	10
<b>material</b>	metal
<b>dimming</b>	dimmable with a trailing edge dimmer and with a leading edge dimmer
<b>Wattage</b>	10 W
<b>LED</b>	inclusive
<b>Colour Rendering Index</b>	>90
<b>Luminous flux in lm</b>	850
<b>Color temperature in Kelvin</b>	2,700 extra warm white
<b>bulb exchange</b>	at the manufacturer / at the factory
<b>Dimensions</b>	H 13 cm   B 10 cm

### Description

The Knapstein ANN-1 wall lamp emits indirect light to the wall behind it. The lamp is 10 cm wide and 12.5 cm high. It is 10 cm deep in total. The ANN-1 is available in matt nickel and white. The integrated LED has a colour temperature of 2,700 Kelvin extra warm white and can be dimmed on site with a leading or trailing edge phase dimmer. In addition to this wall light, the ANN-2 with a width of 15 cm and a height of 18.5 cm is also offered from the series.