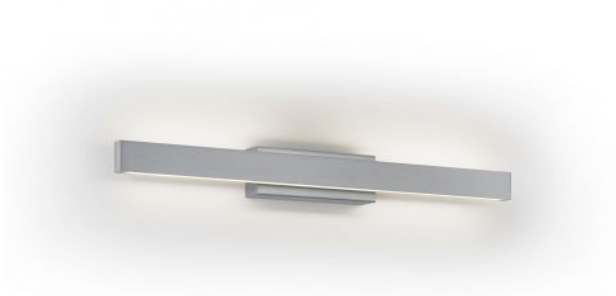


Knapstein

LENE-W



Technical details

Country of Manufacture	 Germany
Manufacturer	Knapstein
Designer	Knapstein
protection	IP20
Scope of delivery	LED
Depth in cm	6
material	brass
dimming	gesture control
Wattage	13 W
LED	inclusive
Colour Rendering Index	>90
Luminous flux in lm	1,600
Color temperature in Kelvin	2,700 extra warm white
bulb exchange	at the manufacturer / at the factory
Dimensions	H 6 cm B 53 cm

Description

The Knapstein LENE-W wall lamp emits its light simultaneously upwards and downwards. This creates lighting effects on the wall around the lamp. The wall lamp is 52.5 cm wide and 5.7 cm high. Its wall bracket is 16.5 cm wide. The depth of the lamp is 6 cm. The light can be switched and continuously dimmed by gesture control. The gesture control sensor is located in the middle of the upper LED. The light can be switched on or off with a wiping hand movement. To dim the light, the hand is held in the sensor area until the desired light intensity is reached. The lamp can also be installed with the sensor on the underside.

An LED with a colour temperature of 2,700 Kelvin extra warm white is integrated as the light source. The LENE-W from Knapstein is made of matt nickel-plated brass.