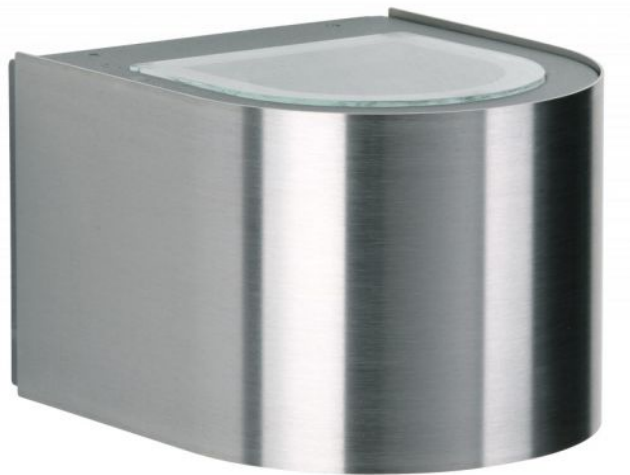



Albert

Wall Spotlight 2337



Technical details

País de la Fabricación	 Alemania
fabricante	Albert
protección	IP44
Volumen de suministro	LED
material	acero Inoxidable, aluminio, vidrio borosilicato
Atenuación	Regulable en el sitio con control de fase inversa
LED	incluyendo
Indice de reproduccion cromatica	80 - 89
El flujo luminoso en lm	660
Temperatura de color en grados Kelvin	3.000 blanco cálido
reemplazo de la bombilla:	en el sitio mismo
El rendimiento del sistema	2 x 3 Watt
Dimensions	H 10 cm B 12 cm L 15 cm

Descripción

The Albert 2337 wall spotlight is made of stainless steel and corrosion-resistant cast aluminium. This lamp is 15 cm long, 12 cm wide and 9.5 cm high. The wall lamp with 2-sided light emission, wide at the top and bottom, has a bulb cover made of borosilicate glass. The 2337 wall spotlight by the German manufacturer Albert is suitable for outdoor use and comes with a mounting plate. The lamp has a replaceable LED bulb.