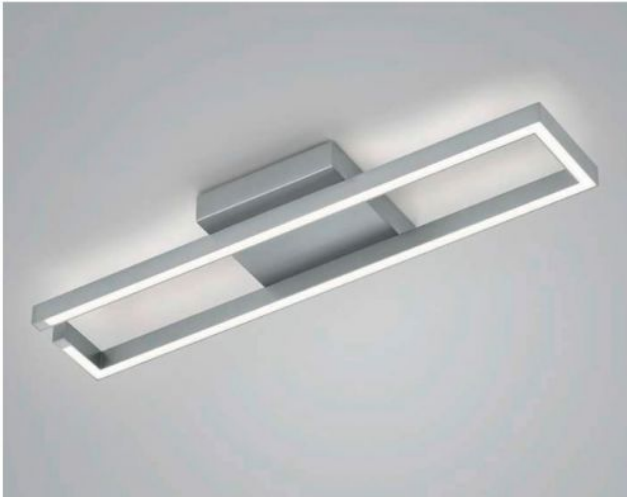


# Knapstein


## YOKO-R

### Oberfläche

- níquel
- negro



### Technical details

|  |  |
|--|--|
| <b>País de la Fabricación</b>                |  Alemania |
| <b>fabricante</b>                            | Knapstein  |
| <b>diseñador</b>                             | Knapstein  |
| <b>año</b>                                   | 2022   |
| <b>protección</b>                            | IP20   |
| <b>Volumen de suministro</b>                 | LED  |
| <b>material</b>                              | metal  |
| <b>Atenuación</b>                            | dimnable con control de fase inversa y con reguladores de control de fase                    |
| <b>Potencia en vatios</b>                    | 46 W   |
| <b>LED</b>                                   | incluyendo   |
| <b>Indice de reproduccion cromatica</b>      | >90  |
| <b>El flujo luminoso en lm</b>               | 5.304  |
| <b>Temperatura de color en grados Kelvin</b> | 2.700 extra blanco cálido  |
| <b>reemplazo de la bombilla:</b>             | en el fabricante / en la fabrica   |
| <b>Dimensions</b>                            | H 7 cm   B 19 cm   L 70 cm   |

### Descripción

The Knapstein YOKO-R ceiling light has a rectangular basic structure. The rectangular shape has a length of 70 cm and a width of 14 cm. The ceiling lamp emits its light upwards and downwards at the same time. The light emitted upwards also creates a uniform lighting effect on the ceiling. The YOKO-R is available in the surfaces matt nickel and black. A dimmable, powerful LED with a colour temperature of 2,700 Kelvin extra warm white is included.