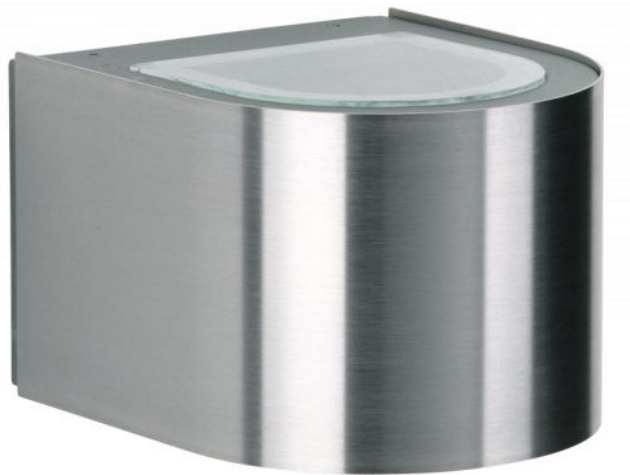



Albert

Wall Spotlight 2337



Technical details

Pays de fabrication	 Allemagne
fabricant	Albert
protection	IP44
Contenu de la livraison	LED
matériel	acier Inoxydable, aluminium, verre borosilicate
atténuation	dimmerable sur place avec commande gradateur de phase inverse
LED	y compris
Indice de rendu des couleurs	80 - 89
Flux lumineux en lm	660
La température de couleur en Kelvin	3.000 blanc chaud
remplacement des ampoules :	sur le site meme
Les performances du système	2 x 3 Watt
Dimensions	H 10 cm B 12 cm L 15 cm

Description

The Albert 2337 wall spotlight is made of stainless steel and corrosion-resistant cast aluminium. This lamp is 15 cm long, 12 cm wide and 9.5 cm high. The wall lamp with 2-sided light emission, wide at the top and bottom, has a bulb cover made of borosilicate glass. The 2337 wall spotlight by the German manufacturer Albert is suitable for outdoor use and comes with a mounting plate. The lamp has a replaceable LED bulb.