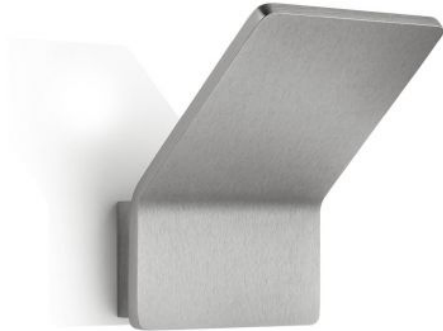


Knapstein

ANN-1

Oberfläche

- nikkel
- wit



Technical details

Land van fabricage	 Duitsland
fabrikant	Knapstein
ontwerper	Knapstein
bescherming	IP20
Omvang van de levering	LED
Diepte in cm	10
materiaal	metaal
dimmen	dimbaar met fase- en fase-afsnijding en fase-regelingsdimmer
Wattage	10 W
LED	inclusief
Kleurweergave-index	>90
Lichtstroom in lm	850
Kleurtemperatuur in Kelvin	2.700 extra warm wit
bulb vervangen:	bij de fabrikant / fabriek
Dimensions	H 13 cm B 10 cm

Omschrijving

The Knapstein ANN-1 wall lamp emits indirect light to the wall behind it. The lamp is 10 cm wide and 12.5 cm high. It is 10 cm deep in total. The ANN-1 is available in matt nickel and white. The integrated LED has a colour temperature of 2,700 Kelvin extra warm white and can be dimmed on site with a leading or trailing edge phase dimmer. In addition to this wall light, the ANN-2 with a width of 15 cm and a height of 18.5 cm is also offered from the series.